



Phoenix

SERVICE AND CALIBRATION

Your **specialist** testing partners

Service and Calibration



Introduction

Phoenix delivers a comprehensive range of UKAS calibration, maintenance and repair services to all makes of test machine, including full refurbishment, control system upgrades and re-purposing.

Whatever the age, size, or make of your system, we will work with you to produce an annual service and calibration programme to give you the best possible performance.

If you have a machine that does not meet your current requirements, or that you believe is beyond economic repair, we can give you options in terms of adding functionality, upgrading or re-conditioning.



UKAS Calibration

The Phoenix Calibration and Service Laboratory has the capability, and fittings, to calibrate and adjust all forms of universal testing machines and accessories, including ESH, Instron, Zwick, MTS, Mayes, Mecmesin, Dartec, Mand and Schenck.

- Calibrations accredited to ISO 17025
- Force (0.05N up to 2MN) to ISO 7500-1, ISO 7500-2, ASTM E4
- Displacement (stroke) to in-house, UKAS accredited, procedure
- Extension (strain) ISO 9513, ASTM E83

In addition we can offer traceable calibrations for:

- Alignment ASTM E1012
- Torque
- Rotation



Servicing

In order to get the best performance and long term reliability from any materials testing machine, as well as making sure you comply with relevant H&S legislation, you should ensure that it is regularly serviced and maintained.

For customers who have in house engineering capability, but wish to have training on the correct preventative maintenance techniques and intervals, we can offer on-site training to your engineers.

Phoenix offers a range of options for customers who do not have in house engineering support, from annual calibration without servicing, through to a full ongoing preventative maintenance programme including changing of consumable items, and monitoring and reporting of key system components.

Where customers have multiple machines on a single hydraulic ring main, Phoenix can supply and fit an oil monitoring system that can automatically measure and report levels of water or particle contamination in the oil.



Although the power pack and individual frames should all be fitted with filters, oil monitoring can give an invaluable early indication of a problem on part of the system and protect the rest of the machines, saving the customer lengthy downtime and the risk of contamination throughout the system.

Refurbishing Actuators

With the right support a test machine frame can last for decades, a common issue for an older system, or one that is used extensively, is wear on the hydraulic actuator (also referred to as hydraulic piston or ram).

Phoenix can remove, repair, re-chrome and re-seal actuators from any make of hydraulic test machine including ESH, Instron, Zwick, MTS, Mayes, Mecmesin, Dartec, Mand and Schenck.

For many older systems the seal details are not known, but Phoenix engineers can have new seals back-engineered to fit into your existing system.



Repair or Re-purposing

We will repair your equipment if it is viable to do so, if not we will give you upgrade options

Phoenix can add functionality to suit your needs, examples of this include adding a horizontal actuator to a frame with a single vertical actuator to enable bi-axial testing. These services are not limited to Phoenix and ESH machinery.

Upgrades & Accessories

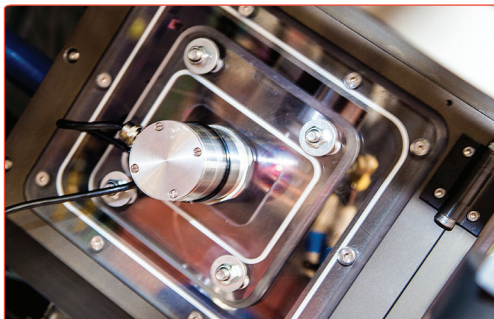
If you have an older frame that is mechanically sound, but has ageing electronics or limited functionality, Phoenix can offer upgrades and re-purposing which could include:

Retrofitting of the Phoenix Alpha Digital Control System to single, dual or multi axis test machines including complete frame re-wiring to the latest standards. The Alpha system includes the full Phoenix software suite and data acquisitions capabilities to maximise the functionality of your test machine.

Environmental chambers – Phoenix designs and manufactures a range of environmental chambers suitable for testing in various atmospheres including inert gas, corrosive gas or vacuum.

Accessories – Phoenix can supply and fit a range of accessories including induction heating, furnaces, extensometry, mechanical or hydraulic grips, loading bars or other instrumentation to suit your requirements.

These services are not limited to Phoenix and ESH machinery.



Relocation

Test machines are expensive and delicate pieces of equipment that need to be handled by specialists. If you are moving one machine or an entire laboratory, Phoenix can offer a partial or full relocation service.

The service will include pre-move assessment (including calibration check), de-commissioning, relocation, re-commissioning (including new hydraulic hoses where required) and re-calibration.

Phoenix has previously supported large relocation projects for, Imperial College London, Cambridge University and Swansea University.





Phoenix Materials Testing Limited
Unit 8 The Wallows Industrial Estate
Fens Pool Avenue
Brierley Hill
DY5 1QA
United Kingdom

T: +44 (0)1384 480 545
F: +44 (0)1384 480 602
E: info@Phoenix-mt.co.uk
W: www.Phoenix-mt.co.uk

RO RUBERY OWEN

Part of Rubery Owen

